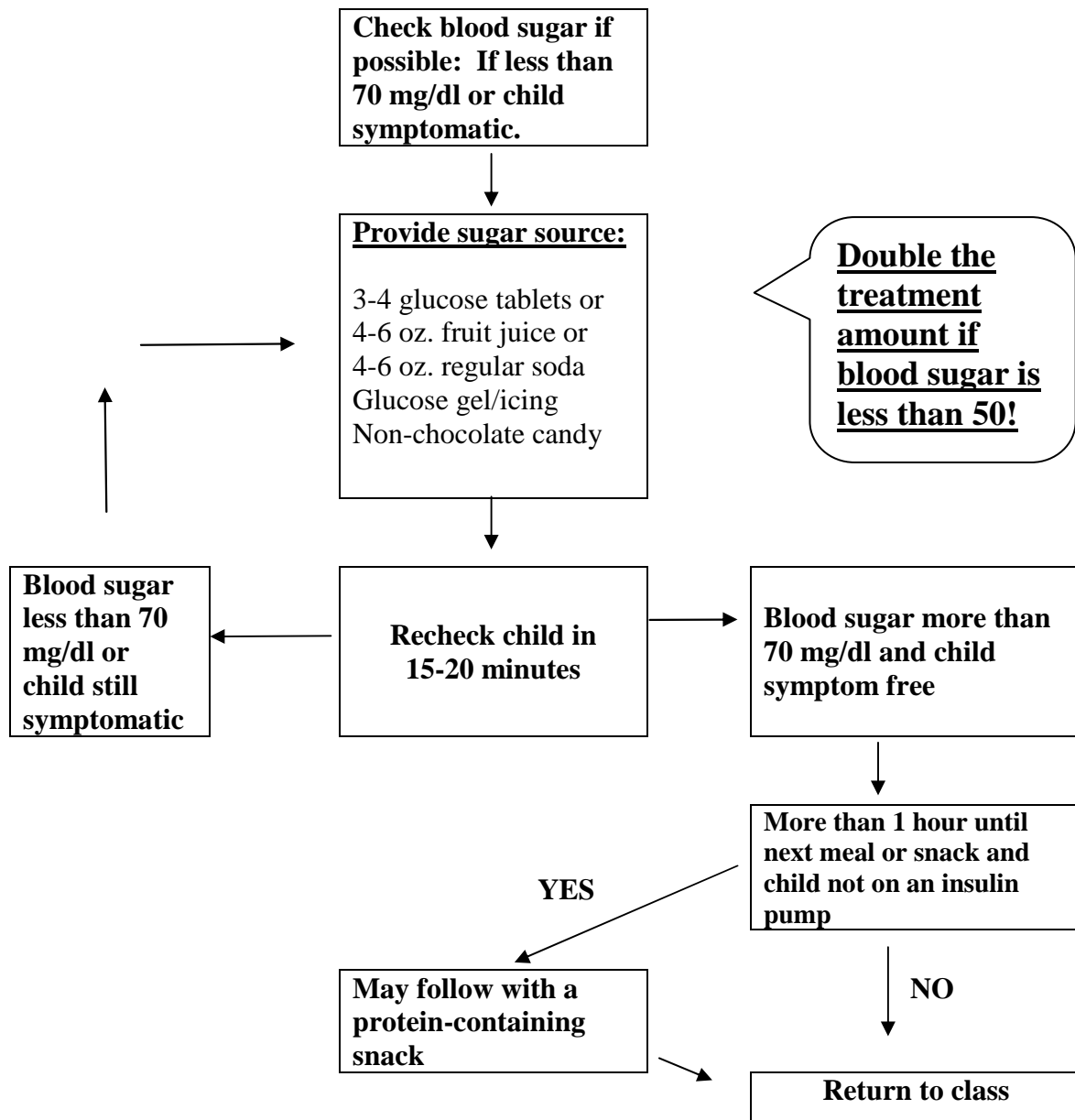


HYPOGLYCEMIA (LOW BLOOD SUGAR)

Signs and Symptoms

- * **Shakiness**
- * **Hunger**
- * **Fatigue**
- * **Confusion**
- * **Behavior/Personality Change**
- * **Pallor**
- * **Headache/Stomach Ache**
- * **Sweatiness**
- * **Irritability/Crying**

Treatment for Suspected Low Blood Sugar



Child unresponsive-Give glucagon injection- Call 911 - Call Parents

Refer to the child's individual diabetes plan for specific guidelines